



SPECIFICATION SHEET

Model #:	_____	Qty:	_____
Project #:	_____		
Consultant:	_____		

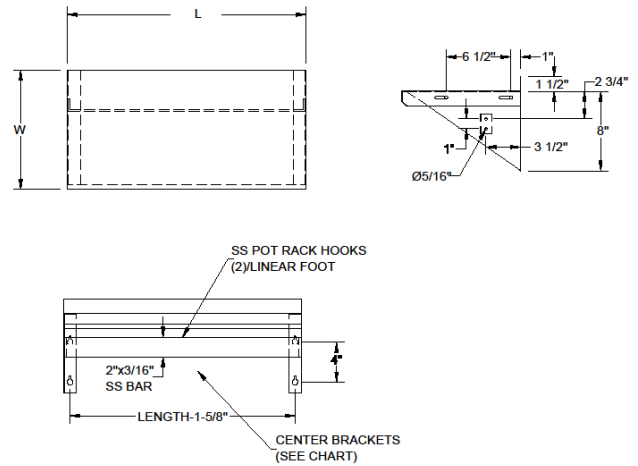
QUALITY FOOD SERVICE EQUIPMENT

WALL SHELF



DIMENSIONS

with pot rack bar



MATERIAL

- ◆ 18GA 300 stainless steel
- ◆ Stainless steel pot rack bar
- ◆ Stainless steel hooks

FEATURES

- ◆ 1-1/2"H backsplash
- ◆ Includes 1 hook per foot
- ◆ Straight safety edge front

Model#	Length	Width	# of Hooks
PS-1224	24"	12"	4
PS-1236	36"	12"	6
PS-1248	48"	12"	8
PS-1260	60"	12"	10
PS-1272	72"	12"	12